

PLUM BOROUGH SCHOOL DISTRICT

OBLOCK JUNIOR HIGH SCHOOL
440 Presque Isle Drive
Pittsburgh, PA 15239



since 1895

The Garland Company, Inc.

PROJECT AERIAL VIEW



DRAWING INDEX

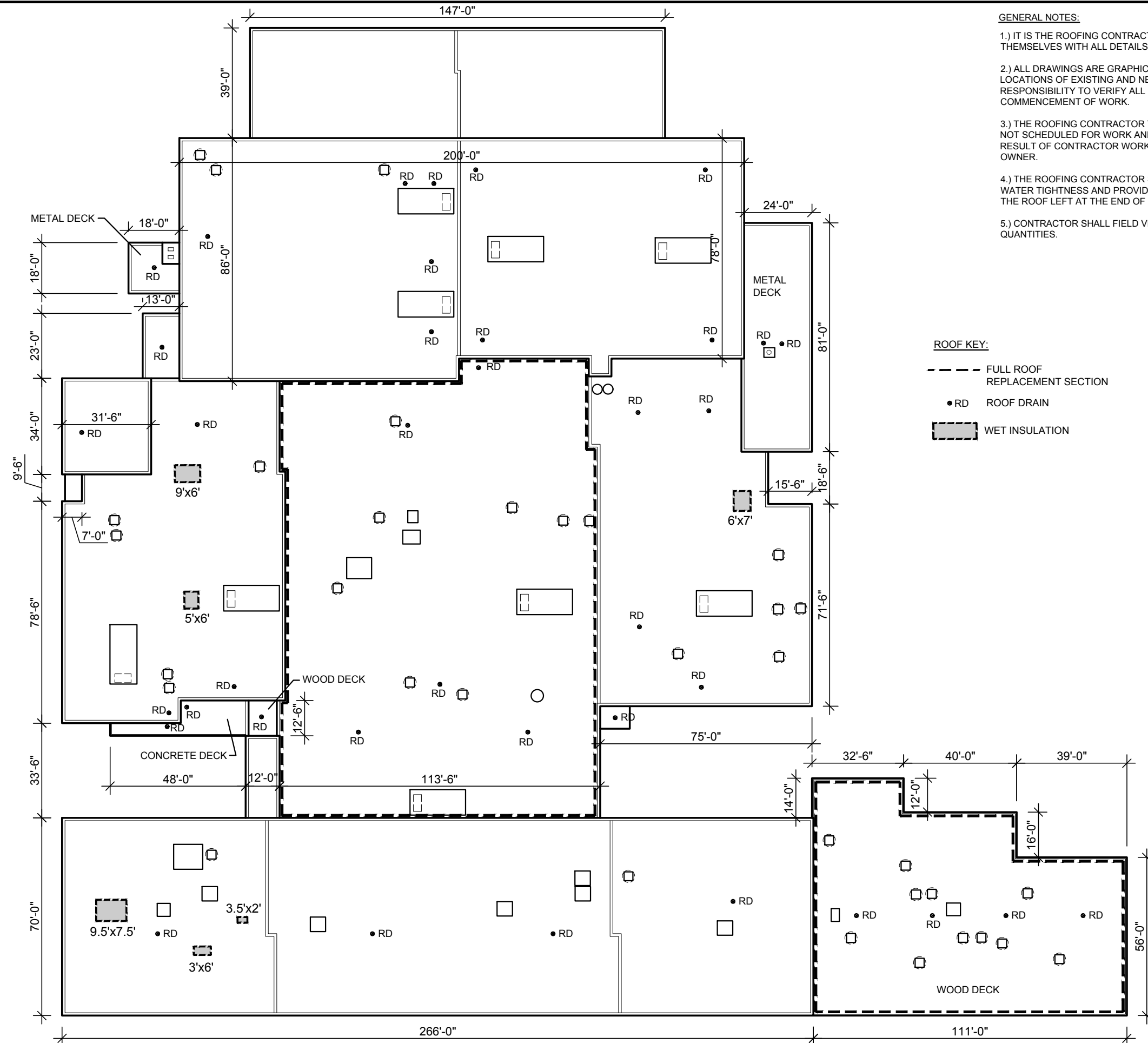
- A-000 COVERSHEET
- A-100 ROOF PLAN
- A-500 ROOF DETAILS
- A-501 ROOF DETAILS

PLUM BOROUGH
SCHOOL DISTRICT
OBLOCK JUNIOR
HIGH SCHOOL
440 Presque Isle Drive
Pittsburgh, PA 15239

SCALE: AS NOTED
DATE: 05/31/2018
PROJ. #:
DRAWN BY:

COVERSHEET

A-000



GENERAL NOTES:

- 1.) IT IS THE ROOFING CONTRACTOR'S RESPONSIBILITY TO FAMILIARIZE THEMSELVES WITH ALL DETAILS INVOLVED IN THE ROOFING CONTRACT.
- 2.) ALL DRAWINGS ARE GRAPHIC REPRESENTATION OF APPROXIMATE LOCATIONS OF EXISTING AND NEW MATERIALS. IT IS THE CONTRACTOR'S RESPONSIBILITY TO VERIFY ALL EXISTING CONDITIONS PRIOR TO COMMENCEMENT OF WORK.
- 3.) THE ROOFING CONTRACTOR TO PROTECT ALL ADJACENT SURFACES NOT SCHEDULED FOR WORK AND TO REPAIR ANY DAMAGED AREAS AS A RESULT OF CONTRACTOR WORK AT NO ADDITIONAL COST TO THE OWNER.
- 4.) THE ROOFING CONTRACTOR SHALL BE RESPONSIBLE TO MAINTAIN WATER TIGHTNESS AND PROVIDE PROTECTION AT ANY/ALL OPENINGS IN THE ROOF LEFT AT THE END OF EACH CONSTRUCTION DAY.
- 5.) CONTRACTOR SHALL FIELD VERIFY ALL DIMENSIONS, CONDITIONS AND QUANTITIES.

ROOF KEY:

- FULL ROOF REPLACEMENT SECTION
- RD ROOF DRAIN
- WET INSULATION

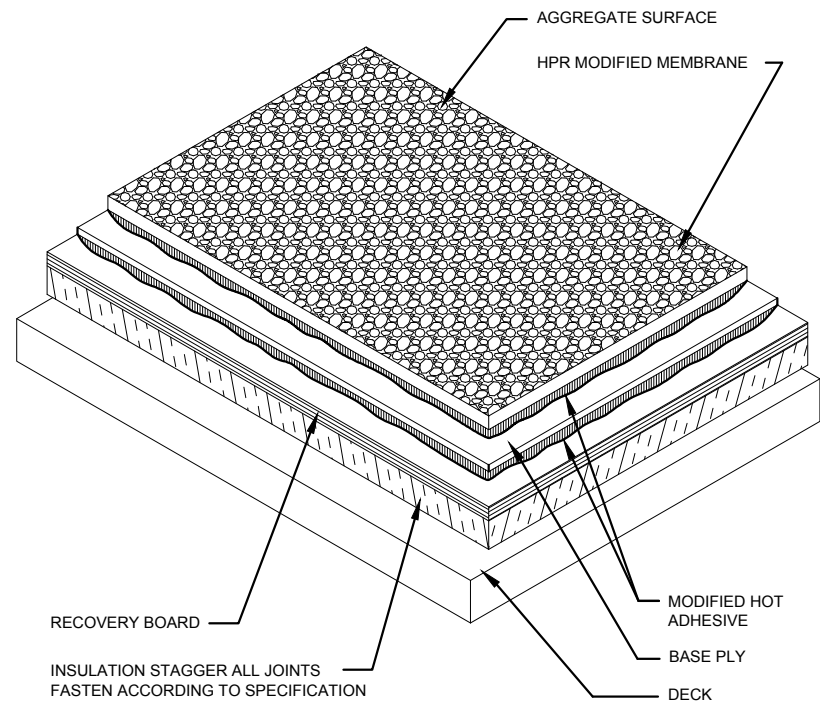


The Garland Company, Inc.

PLUM BOROUGH SCHOOL DISTRICT
OBLOCK JUNIOR HIGH SCHOOL
 440 Presque Isle Drive
 Pittsburgh, PA 15239

SCALE: AS NOTED
 DATE: 05/29/2018
 PROJ. #:
 DRAWN BY:

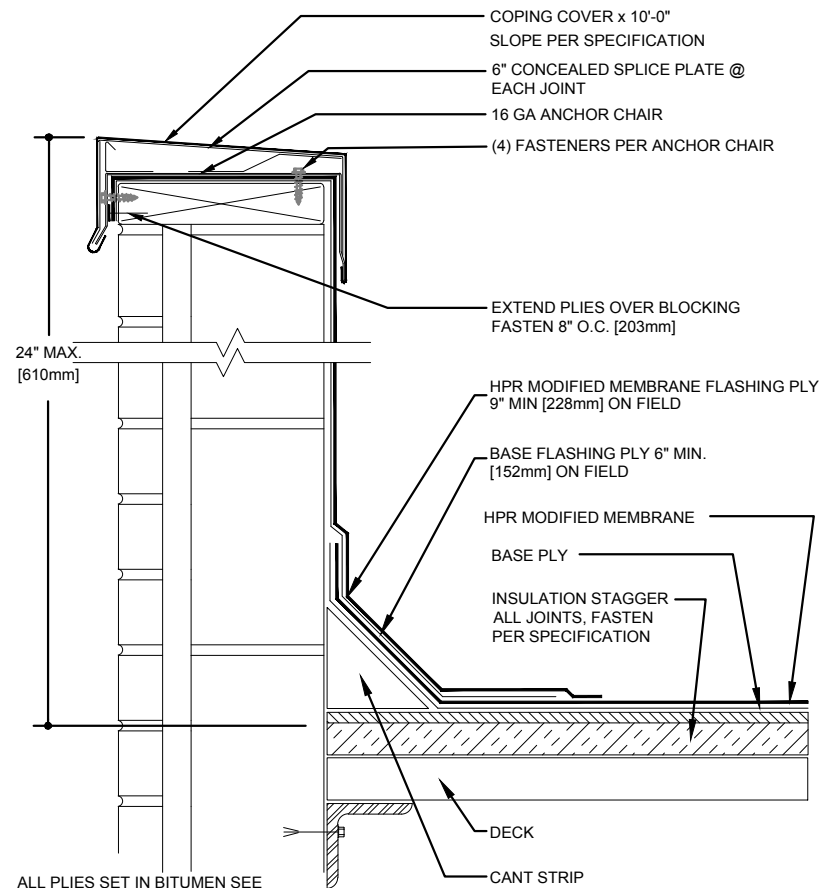
ROOF PLAN



ALL PLIES SET IN BITUMEN SEE SPECIFICATIONS FOR SURFACING

1 TYPICAL ROOF SECTION (GRAVEL FINISH) DETAIL

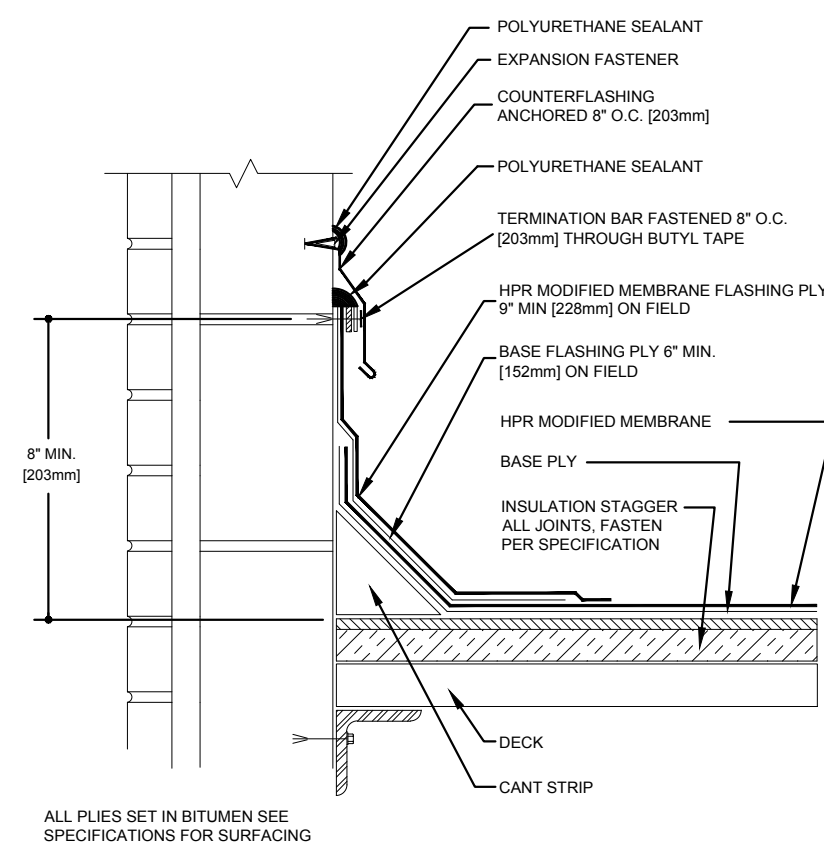
A-500 SCALE: N.T.S.



ALL PLIES SET IN BITUMEN SEE SPECIFICATIONS FOR SURFACING

2 COPING CAP DETAIL

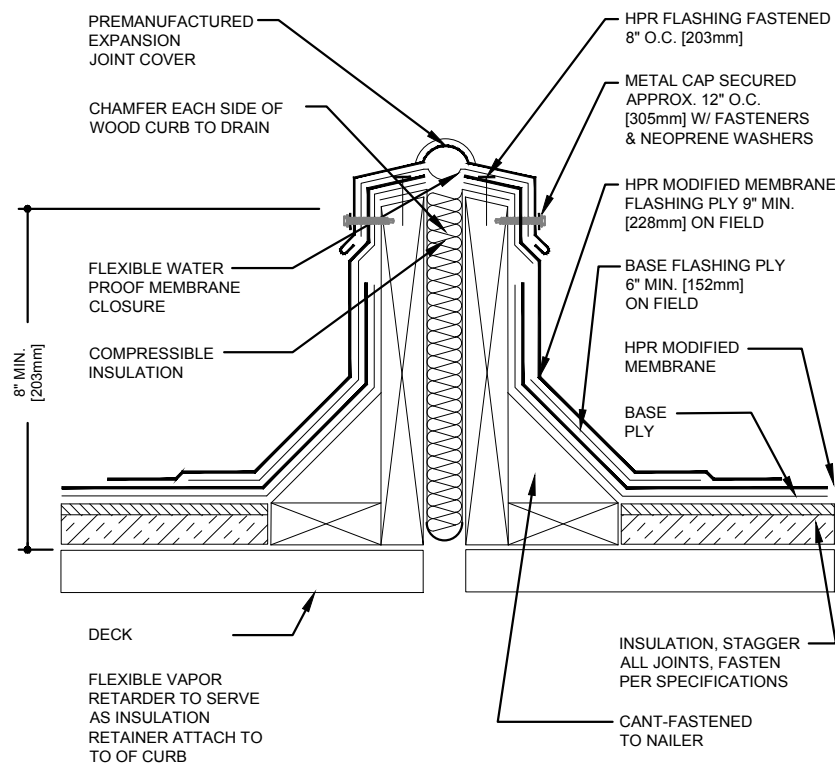
A-500 SCALE: N.T.S.



ALL PLIES SET IN BITUMEN SEE SPECIFICATIONS FOR SURFACING

3 REGLET MOUNTED COUNTERFLASHING DETAIL

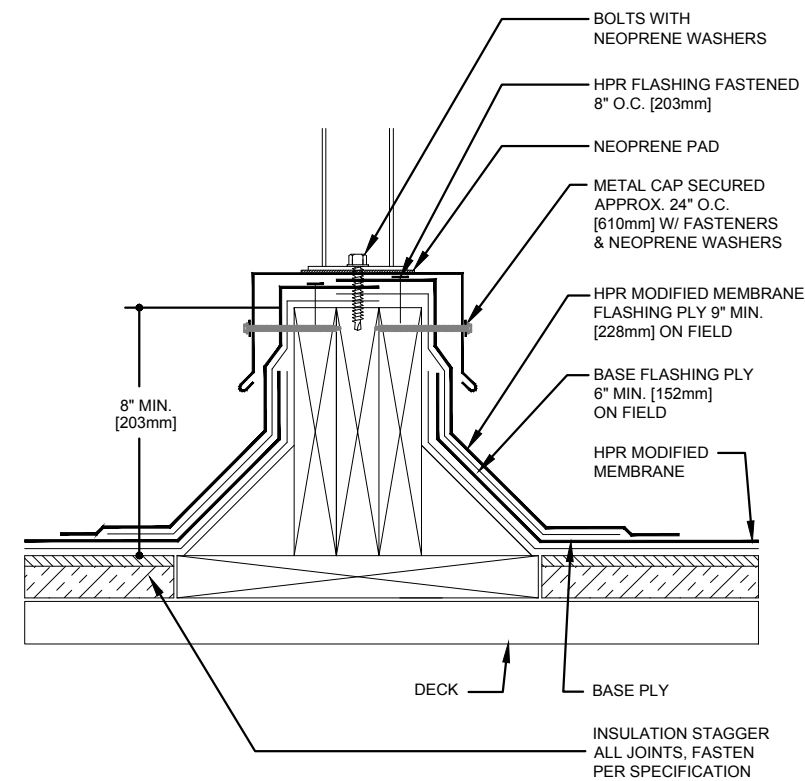
A-500 SCALE: N.T.S.



ALL PLIES SET IN BITUMEN SEE SPECIFICATIONS FOR SURFACING

4 EXPANSION JOINT DETAIL

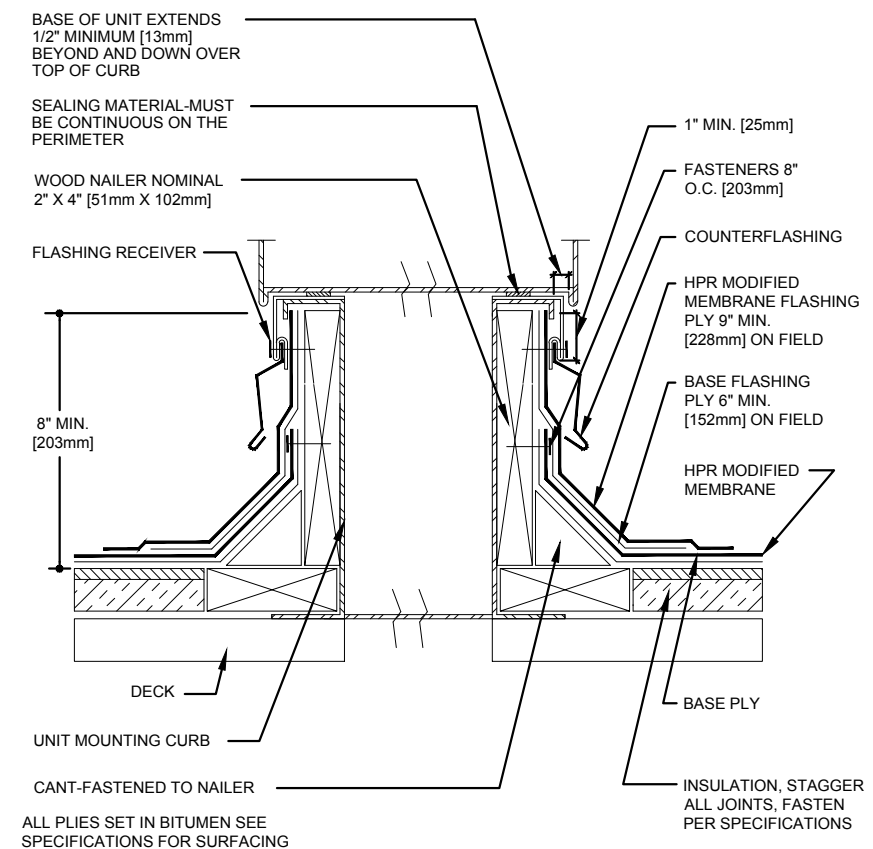
A-500 SCALE: N.T.S.



ALL PLIES SET IN BITUMEN SEE SPECIFICATIONS FOR SURFACING

5 EQUIPMENT CURB DETAIL

A-500 SCALE: N.T.S.



ALL PLIES SET IN BITUMEN SEE SPECIFICATIONS FOR SURFACING

6 CURB AT AIR HANDLING UNIT DETAIL

A-500 SCALE: N.T.S.



The Garland Company, Inc.

PLUM BOROUGH SCHOOL DISTRICT
OBLOCK JUNIOR HIGH SCHOOL
440 Presque Isle Drive
Pittsburgh, PA 15239

SCALE: AS NOTED

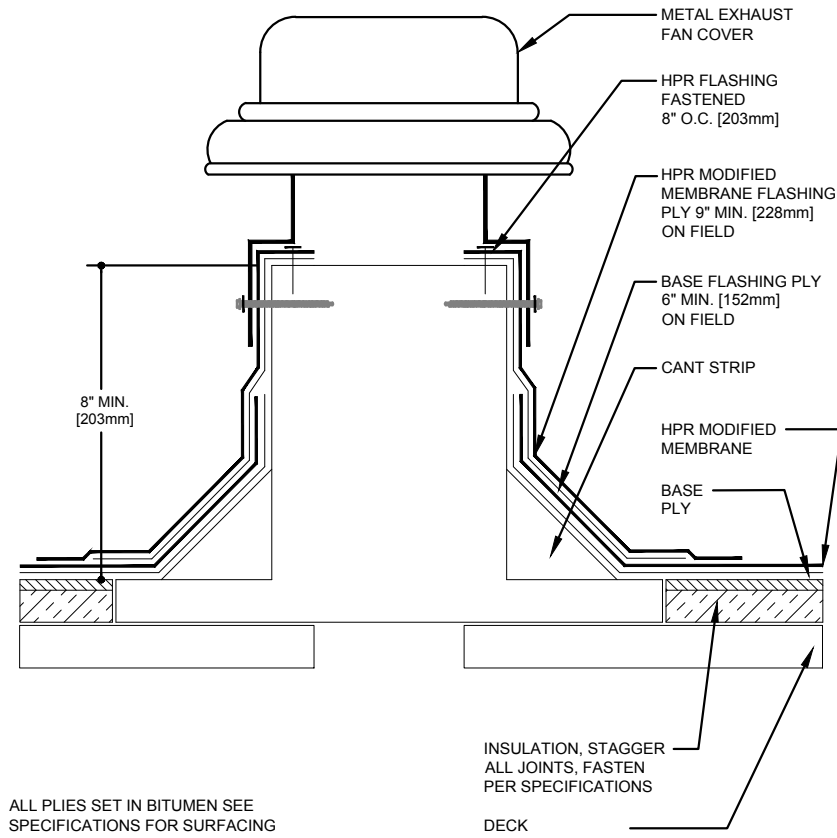
DATE: 05/31/2018

PROJ. #:

DRAWN BY:

ROOF DETAILS

A-500

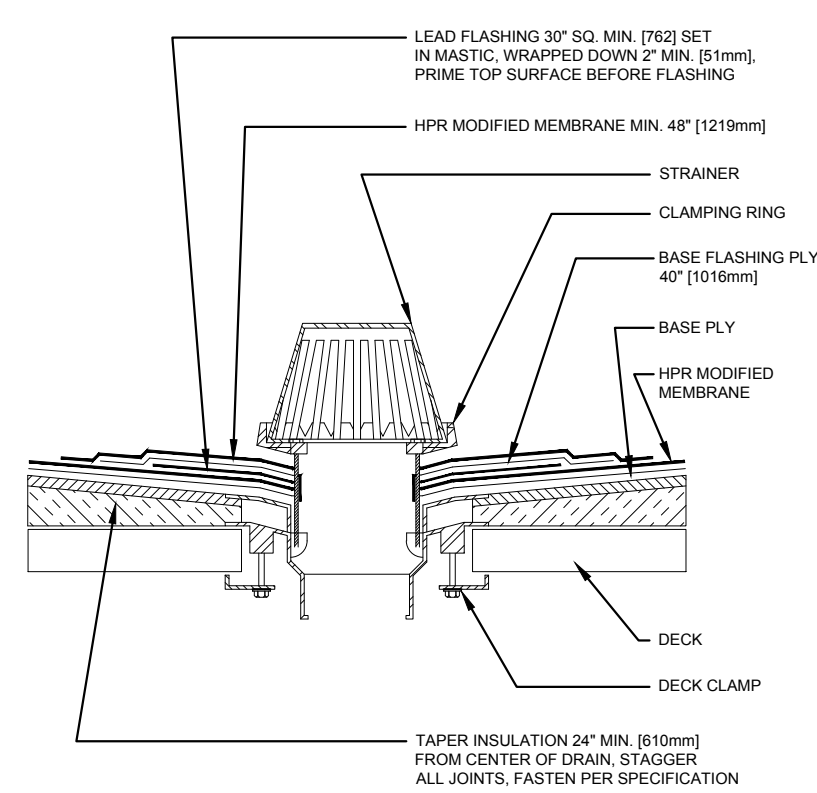


ALL PLIES SET IN BITUMEN SEE SPECIFICATIONS FOR SURFACING

DECK

1 EXHAUST FAN DETAIL

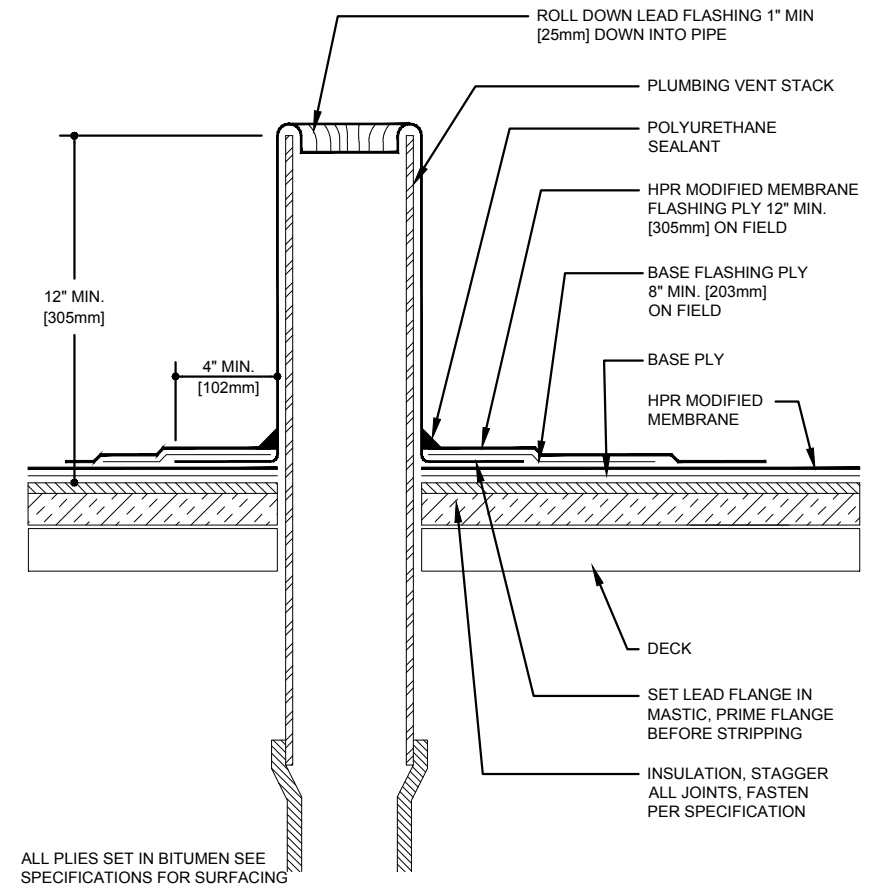
A-501 SCALE: N.T.S.



ALL PLIES SET IN BITUMEN SEE SPECIFICATIONS FOR SURFACING

2 ROOF DRAIN DETAIL

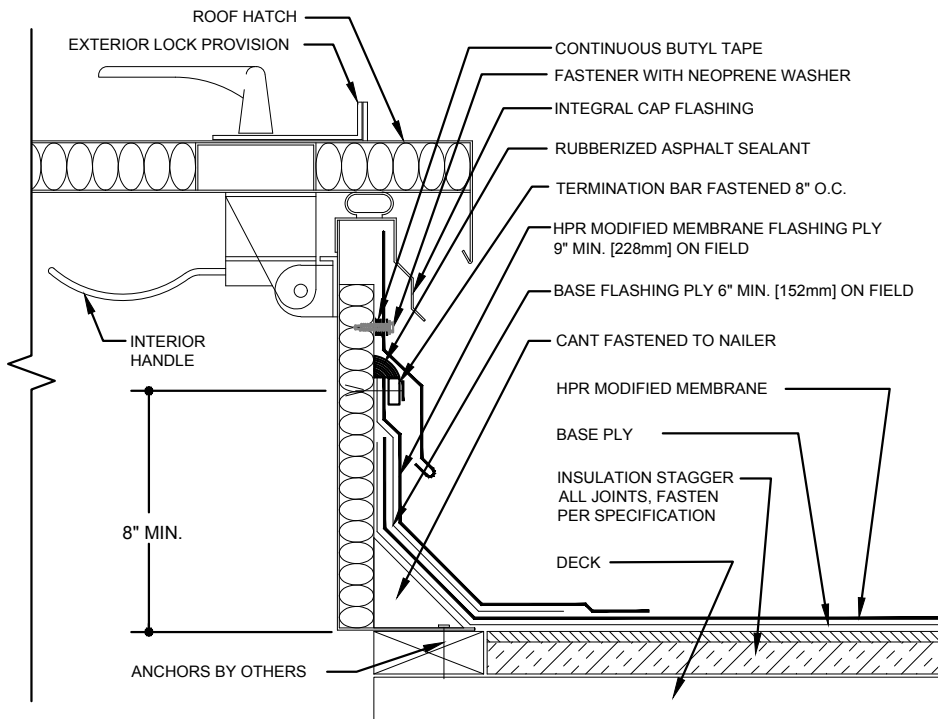
A-501 SCALE: N.T.S.



ALL PLIES SET IN BITUMEN SEE SPECIFICATIONS FOR SURFACING

3 PLUMBING STACK DETAIL

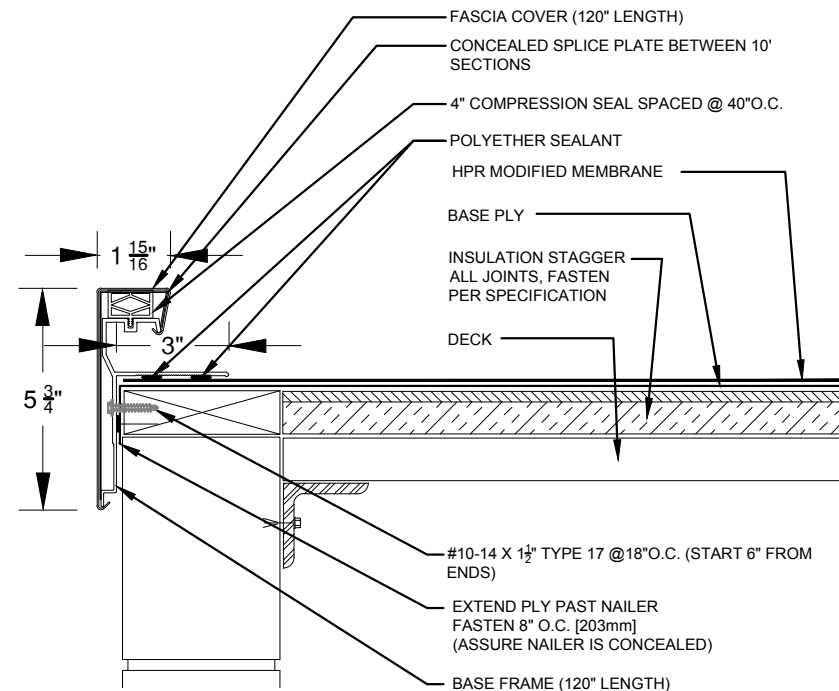
A-501 SCALE: N.T.S.



ALL PLIES SET IN BITUMEN SEE SPECIFICATIONS FOR SURFACING

4 ROOF HATCH DETAIL

A-501 SCALE: N.T.S.



ALL PLIES SET IN BITUMEN SEE SPECIFICATIONS FOR SURFACING

5 METAL ROOF EDGE FLASHLESS DETAIL

A-501 SCALE: N.T.S.



since 1895

The Garland Company, Inc.

PLUM BOROUGH SCHOOL DISTRICT

OBLOCK JUNIOR HIGH SCHOOL

440 Presque Isle Drive
Pittsburgh, PA 15239

SCALE: AS NOTED

DATE: 05/31/2018

PROJ. #:

DRAWN BY:

ROOF DETAILS

A-501